



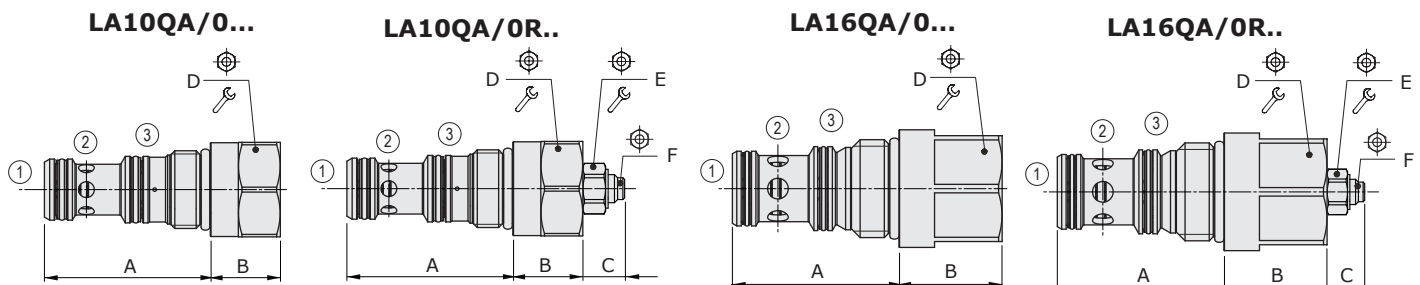
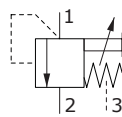
LA..QA type logic element - 3 way

- Pilot to close configuration
- Fixed or adjustable Stand-by
- SAE10 and SAE16 cavities

Technical specifications and diagrams are measured with mineral oil of 46 cSt viscosity at 40°C (104°F) temperature.

| | LA10QA | LA16QA |
|--|--|---|
| Nominal flow | 80 l/min (21 US gpm) | 190 l/min (50 US gpm) |
| Max. pressure | 350 bar (5100 psi) | |
| Opening pressure | fixed setting: 1, 5, 10 bar (14.5, 72.5, 145 psi) adjustable setting: from 8 to 15 bar (116 to 218 psi) | |
| Oil leakage | at 210 bar (3050 psi) 80 cm ³ /min (4.88 in ³ /min) | 230 cm ³ /min (14.03 in ³ /min) |
| Fluid | mineral based oil | |
| Viscosity | 10-200 cSt | |
| Max level of contamination | 20/18/14 ISO4406 | |
| Fluid temperature | with NBR seals with FPM seals | from -20°C (-4°F) to 80°C (176°F) from -20°C (-4°F) to 100°C (212°F) |
| Environmental temp. for working conditions | from -20°C (-4°F) to 50°C (122°F) | |
| Cavity | SAE 10/3Q | SAE 16/3Q |
| Weight | 0.15 kg (0.33 lb) | 0.45 kg (0.99 lb) |

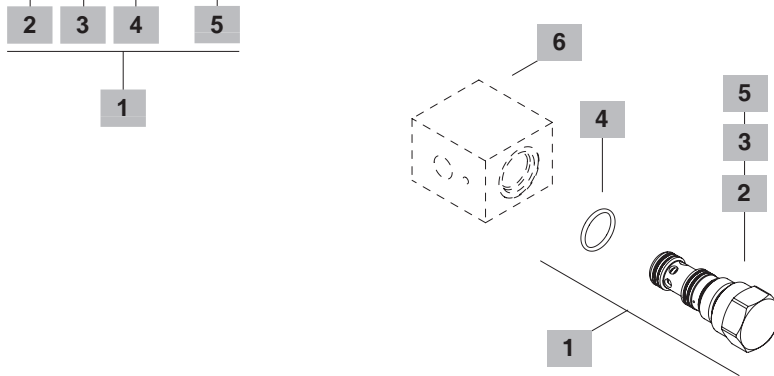
NOTE - For different conditions, please contact Walvoil Sales Dpt.



| Valve type | A | | B | | C (max) | | D | | | E | | F | |
|------------|------|------|------|------|---------|------|----|-----|------|----|-----|------|---|
| | mm | in | mm | in | mm | in | Ø | Nm | lbft | Ø | Nm | lbft | Ø |
| LA10QA | 47.6 | 1.87 | 20 | 0.79 | 21 | 0.83 | 27 | 70 | 52 | 13 | 9.8 | 7.2 | 3 |
| LA16QA | 56.9 | 2.24 | 35.1 | 1.38 | 24 | 0.94 | 36 | 100 | 74 | 13 | 9.8 | 7.2 | 3 |

Ordering codes and description composition

LA 10QA/0 C 0 B SB=12bar



| 1 Cartridge | | |
|-------------------------|--------------|--|
| TYPE | CODE | DESCRIPTION |
| SAE cavity 10/30 | | |
| LA10QA/0B0B | 0LA10Q002003 | Fixed setting, 5 bar (72.5 psi) |
| LA10QA/0C0B | 0LA10Q002001 | Fixed setting, 10 bar (145 psi) |
| LA10QA/0R0B SB=12bar | 0LA10Q002002 | Adjustable setting, std setting 12 bar (174 psi) |
| SAE cavity 16/30 | | |
| LA16QA/0C0B | 0LA16Q002000 | Fixed setting, 10 bar (145 psi) |
| LA16QA/0R0B SB=12bar | 0LA16Q002001 | Adjustable setting, std setting 12 bar (174 psi) |

| 2 Stand by | |
|------------|---|
| TYPE | DESCRIPTION |
| A | Fixed setting: 1 bar (14.5 psi) |
| B | Fixed setting: 5 bar (72.5 psi) |
| C | Fixed setting: 10 bar (145 psi) |
| R | Adjustable setting: from 8 to 15 bar (116 to 218 psi) |

Setting is referred to 1 l/min (0.26 US gpm) flow

| 3 Lead sealing | |
|----------------|--|
| TYPE | DESCRIPTION |
| 0 | Without sealing |
| X | With sealing: for valves with adjustable stand-by only |

| 4 Seals | |
|---------|---|
| TYPE | DESCRIPTION |
| B | NBR (Buna) o-ring seals, std configuration |
| V | FPM (Viton) o-ring seals, contact Sales Dept. |

| 5 Stand-by setting | |
|--------------------|---|
| TYPE | DESCRIPTION |
| | To be specified only with adjustable stand-by valve |

| 6 Valve body | | |
|-----------------|------------|---|
| TYPE | CODE | DESCRIPTION |
| SAE 10/3Q-G 1/2 | 3CC1032D21 | Steel body for cavity 08 valve, G 1/2 standard thread |
| SAE 16/3Q-G 3/4 | 3CC1632E21 | Steel body for cavity 16 valve, G 3/4 standard thread |

For aluminium bodies or different threading see from page 217

Rating diagrams

